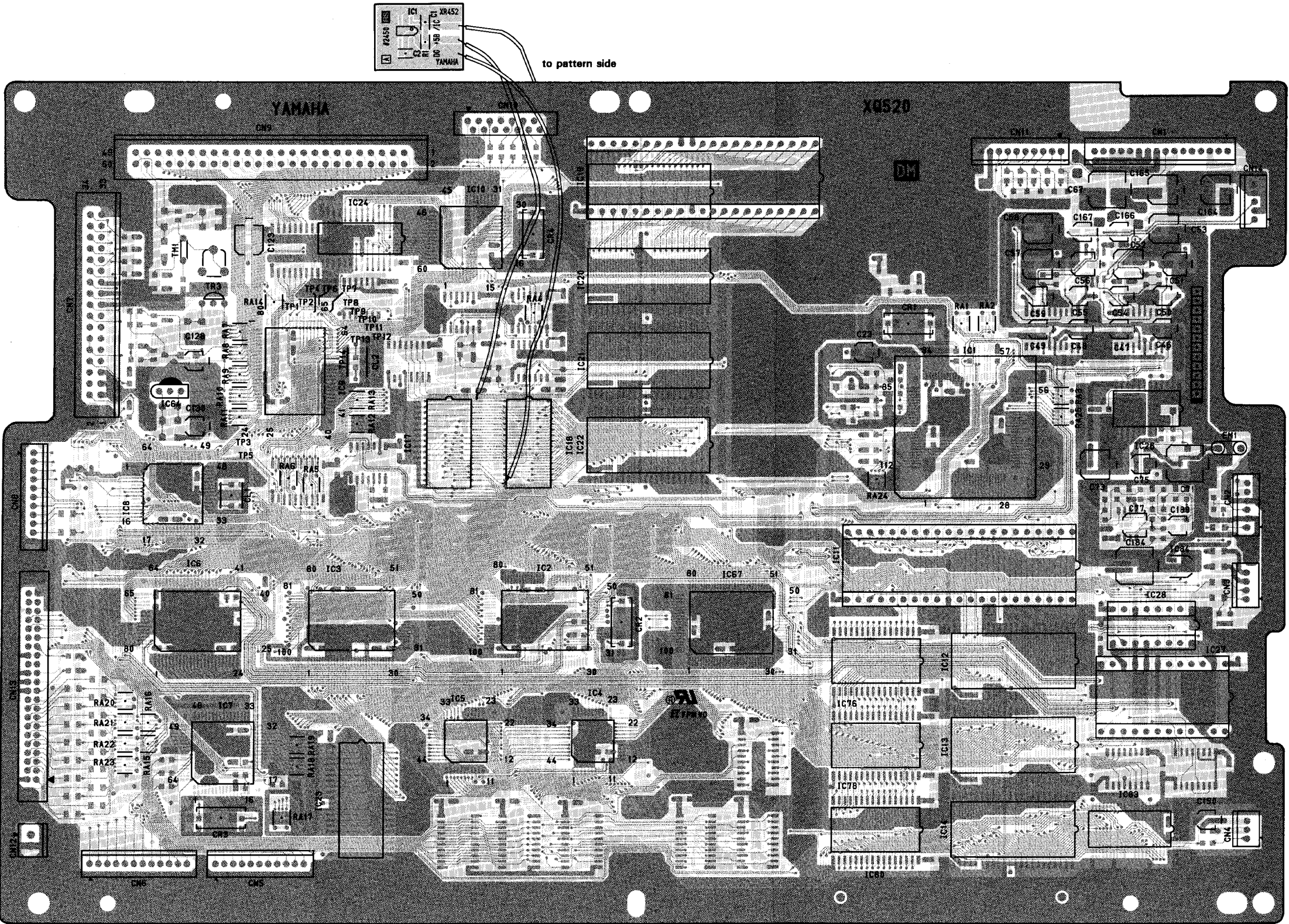


CIRCUIT BOARDS

DM Circuit Board(Component side) ※Pattern side is described on pages 28 and 29.

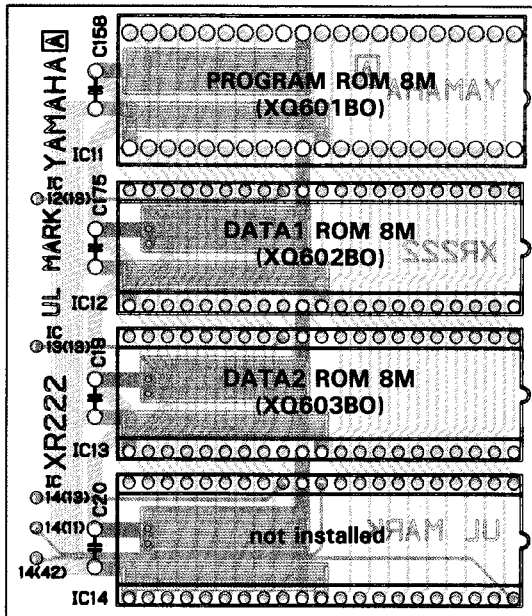
RS circuit board



Components side

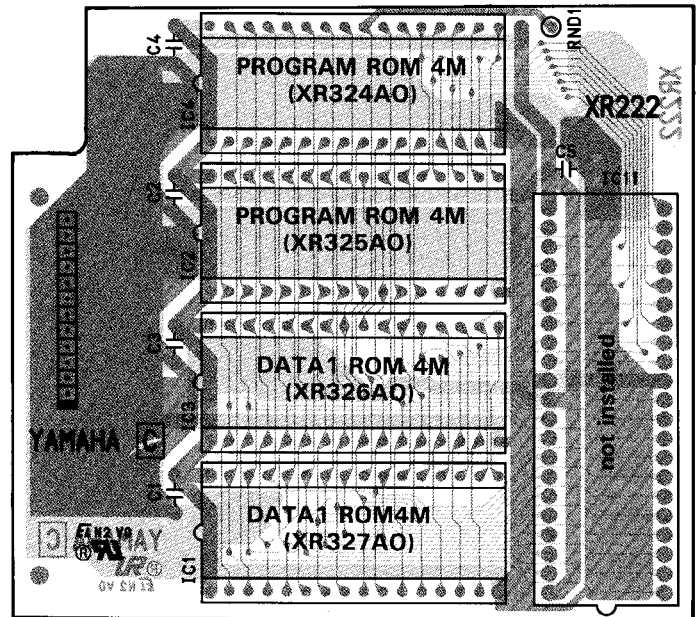
DM: 2NA-VT09300-1/2  
RS: 2NA-VU14310

### ● SR1 Circuit Board



Components side

### ● SR2 Circuit Board



Components side

The SR1 circuit board is located on the DM circuit board of the PSR-7000 of product numbers s/#1001- s/#1098.

The SR2 circuit board is located on the DM circuit board of the PSR-7000 of product numbers s/#1099- s/#5400.

**The SR1 and SR2 circuit boards are not available as servicing parts.**  
**When you replace the PROGRAM or DATA ROMs, you should place the servicing ROMs, after removing the SR1 or SR2 circuit board.**

| Product numbers     | s/#1001-s/#1098                          | s/#1099-s/#5400                          | s/#5401-                                 |
|---------------------|--|--|--|
| Sub board           | SR1 circuit board                        | SR2 circuit board                        | not installed                            |
| PROGRAM ROM (IC 11) | 8M (XQ601B00)                            | 4M (XR324A00) and<br>4M (XR325A00)       | 8M (XQ601C00)<br>on the DM circuit board |
| DATA1 ROM (IC 12)   | 8M (XQ602B00)                            | 4M (XR326A00) and<br>4M (XR327A00)       | 8M (XC602C00)<br>on the DM circuit board |
| DATA2 (IC 13)       | 8M (XQ603B00)                            | 8M (XQ603C00)<br>on the DM circuit board | 8M (XQ603C00)<br>on the DM circuit board |
| STYLE (IC 14)       | 8M (XQ943A00)<br>on the DM circuit board | 8M (XQ943A00)<br>on the DM circuit board | 8M (XQ943A00)<br>on the DM circuit board |

# ●DM circuit board

## Notes)

|                         |  |
|-------------------------|--|
| Circuit Board:          | DM (VT093000) XQ520D0  |
| 1. IC                   |  |
| IC 001:                 | HD6437034C48F (XQ600C00) CPU   |
| IC 002,003:             | YMW275B-F (XN346B00) SWP20   |
| IC 004,005:             | YMW279F (XN347A00) SWD   |
| IC 006:                 | HD62098 (XM309A00) MEG   |
| IC 007:                 | HD6433228A86F (XQ491B00) CPU   |
| IC 008:                 | HD63266F (XI939A00) FDC  |
| IC 009:                 | LC92018B-500 (XI616A00) LD03   |
| IC 010:                 | SED1335F0B (XQ595A00) LCDC   |
| IC 011:                 | (XQ601C00) ROM 8M (PROGRAM)  |
| IC 012:                 | (XQ602C00) ROM 8M (DATA1)  |
| IC 013:                 | MSM538022C-C2G5- (XQ603C00) ROM 8M (DATA2)                                 |
| IC 014:                 | (XQ943A00) ROM 16M (STYLE)   |
| IC 017,018:             | HM658512ALFP-8V (XQ497A00) PSRAM 4M  |
| IC 019:                 | LH537KWZ (XQ605B00) ROM 16M (WAVE1)  |
| IC 020:                 | UPD23C1600JGX (XQ606B00) ROM 16M (WAVE2)                                   |
| IC 021:                 | UPD23C1600JGX (XQ607B00) ROM 16M (WAVE3)                                   |
| IC 022:                 | LH537KV0 (XQ608B00) ROM 16M (WAVE4)  |
| IC 023:                 | LC321664AM-80-TR (XQ032A00) DRAM 1M  |
| IC 024:                 | M5M5256BFP-70LL (XN279A00) SRAM 256K or HY62256ALJ-70 (XP253A00) SRAM 256K |
| IC 026:                 | LC7886M-TRM (XQ209A00) ADC   |
| IC 027:                 | YM6104 (XE788A00) DEQ2   |
| IC 028:                 | YM3422 (XE862A00) ES1  |
| IC 029,030:             | PCM1702U (XM896A00) DAC or PCM1702U (XP551A00) DAC                         |
| IC 031,032:             | UPC4570G2 (XF291A00) OP AMP  |
| IC 036:                 | HD74HC08FPTR (XL093A00) AND  |
| IC 037:                 | TC74HC4075AF (XL393A00) OR   |
| IC 043:                 | HD74AC138FPTR (XP446A00) DECODER   |
| IC 050,051,052,053,054: | SN74HC244NSR (XD233A00) BUS BUFFER   |
| IC 057:                 | TC74AC245F (XQ593A00) TRANSCEIVER  |
| IC 060:                 | TC74AC574F (XR237A00) D-FF or  |
| IC 061:                 | IC-PST591DMT (XP226A00) RESET  |
| IC 064:                 | AN79L18 (XP771A00) REGULATOR - 18V   |
| IC 065,066:             | SN74HC04NSR (XD830A00) INVERTER or HD74HC04FPTR (XL092A00) INVERTER        |
| IC 067:                 | TC14L010A (XQ460C00) GATE ARRAY  |
| IC 072:                 | HD74HC74FPTR (XL096A00) D-FF   |
| IC 076-081:             | HM628128BLFP-7SL (XM901B00) SRAM 1M or CXK581000AM-70LL (XP235A00) SRAM 1M |
| IC 082:                 | HD74AC138FPTR (XP446A00) DECODER   |
| IC 083:                 | KM416C256BLLT-7 (XQ586A00) DRRAM 4M  |
| IC 084:                 | NJM78L05UA (XJ598A00) REGULATOR +5V  |
| IC 085:                 | TC74HC175AF-TP1 (XD658A00) D-FF  |
| 2. Transistor           |  |
| TR 003:                 | 2SA1020-Y(TPE6) (VI242900)   |
| TR 004,006:             | 2SC2712 Y (VJ927100)   |
|                         | 2SC2462LCTR C (VQ395500)   |
| TR 005:                 | 2SA1162 O,Y (VJ927200)   |
| 3. Transistor Array     |  |
| IC 025:                 | TD62785F SOURCE (VQ202400)   |
| 4. Diode                |  |
| D 0009,0013,0014,0016:  | MA221 (VB493900) or RLS-73 (VB797600)                                      |
| 5. Zener Diode          |  |

|  |   |
|--|---|
| ZD 003,004:  | RLZJ 4.3A 4.3V (VJ148000)                   |
| 6. Thermistor  |   |
| TM:  | ERTD2ZGJ202T 2K (VS696900)                  |
| 7. Monolithic Ceramic Cap.   |   |
| C 0003,0005,0006,0008,0009,0019,0020,0025-0028,0030,0031,0035,0036,0041-0045,0061,0062,0068-0070,0072,0074,0085,0086,0089-0101,0104-0111,0113,0114,0117,0120,0121,0122,0125,0127,0131,0134,0140,0141,0152,0153-0155,0156,0158,0162,0163,0168-0170,0175-0183,0185-0188,0191,0192: | F 0.100 25V Z (UB245100)                    |
| C 0024:  | F 0.010 50V Z (UB044100)                    |
| C 0033:  | SL 12P 50V J (UB051120)                     |
| C 0034:  | SL 10P 50V D (UB051100)                     |
| C 0060,0063,0079:  | B 680P 50V K (UB012680)                     |
| C 0078:  | B 5600P 50V K (UB013560)                    |
| C 0080:  | B 2200P 50V K (UB013220)                    |
| C 0081:  | SL 120P 50V J (UB052120)                    |
| C 0082,0157:   | SL 100P 50V J (UB052100)                    |
| C 0084:  | B 470P 50V K (UB012470)                     |
| C 0102,0103:   | SL 22P 50V J (UB051220)                     |
| C 0115,0116,0132,0133:   | SL 15P 50V J (UB051150)                     |
| C 0118:  | SL 27P 50V J (UB051270)                     |
| C 0119:  | SL 18P 50V J (UB051180)                     |
| C 0160,0161:   | SL 270P 50V J (UB052270) (UB05227)          |
| C:   | F 0.100 25V Z (UB245100)                    |
| 8. Electrolytic Cap. (chip)  |   |
| C 0023,0075:   | 10 16V (UF037100)                           |
| C 0046,0047,0048,0049,0050,0054,0055,0059:   | 4.7 25V (UF046470)                          |
| C 0051:  | 22 10V (UF02722)                            |
| C 0052:  | 100 10V (UF02810) or 100 10V UUR1 (UF12810) |
| C 0053:  | 47 10V (UF02747)                            |
| C 0056:  | 22 10V (UF02722)                            |
| C 0057:  | 100 10V (UF02810) or 100 10V UUR1 (UF12810) |
| C 0058:  | 47 10V (UF02747)                            |
| C 0067:  | 470 10V UUR1 (UF12847)                      |
| C 0071:  | 220 16V UUR1 (UF138220)                     |
| C 0073:  | 47 16V (UF037470)                           |
| C 0077:  | 4.7 50V (UF066470)                          |
| C 0123:  | 100 10V UUR1 (UF12810) or 100 10V (UF02810) |
| C 0128:  | 0.1 50V (UF065100)                          |
| C 0130:  | 3.3 50V (UF066330)                          |
| C 0150,0166,0167:  | 1 50V (UF066100)                            |
| C 0164:  | 100 10V UUR1 (UF12810) or 100 10V (UF02810) |
| C 0165:  | 47 10V (UF02747)                            |
| C 0189:  | 0.47 50V (UF065470)                         |
| C 0184:  | 100 16V UUR1 (UF138100)                     |
| 9. Carbon Resistor   |   |
|  | 220.0 1/4 J (HF455220)                      |
|  | 10.0K 1/4 J (HF457100)                      |
| 10. Carbon Resistor (chip)   |   |
| R 0003,0006,0009,0014,0024,0040,0055,0162-0166:  | 220.0 0.1 J (RD255220)                      |
| R 0022:  | 270.0 0.1 J (RD255270)                      |
| R 0023,0054:   | 47.0K 0.1 J (RD257470)                      |
| R 0031-0033,0067,0084,0085,0095-0097:  | 100.0 0.1 J (RD255100)                      |